

Older Adults are at High Risk for Severe RSV Infection

Respiratory syncytial virus, or RSV, is a common virus that affects the lungs and breathing passages

RSV infections can be dangerous for certain adults. Adults at highest risk for severe RSV infection include:

- Older adults, especially those 65 years and older
- Adults with chronic heart or lung disease
- Adults with weakened immune systems

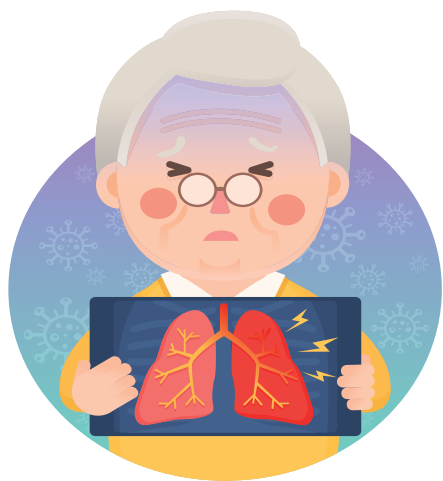
Each year, it is estimated that between 60,000–120,000 older adults in the United States are hospitalized and 6,000–10,000 of them die due to RSV infection.

Severe RSV infection

When an older adult gets RSV infection, they typically have mild cold-like symptoms including runny nose, sore throat, cough, and headache. But RSV can sometimes lead to serious conditions such as:

- Pneumonia (infection of the lungs)
- More severe symptoms for people with asthma
- More severe symptoms for people with chronic obstructive pulmonary disease (COPD) (a chronic disease of the lungs that makes it hard to breathe)
- Congestive heart failure (when the heart can't pump blood and oxygen to the body's tissues)

Older adults who get very sick from RSV may need to be hospitalized. Some may even die. Older adults are at greater risk than young adults for serious complications from RSV because our immune systems weakens when we are older.



Scientists are working to develop vaccines

There is no vaccine to prevent RSV infection yet, but scientists are working hard to develop one. If you are concerned about your risk for RSV, talk to your doctor.

www.cdc.gov/rsv



How to protect yourself and loved ones

RSV circulation starts in the fall and peaks in the winter. If you are at high risk for severe RSV infection, or if you interact with an older adult, you should take extra care to stay healthy:

- **Wash your hands often**
Wash your hands often with soap and water for 20 seconds. If soap and water are not available, use an alcohol-based hand sanitizer. Washing your hands will help protect you from germs.
- **Keep your hands off your face**
Avoid touching your eyes, nose, and mouth with unwashed hands. Germs spread this way.
- **Avoid close contact with sick people**
Avoid close contact, such as kissing, and sharing cups or eating utensils with people who have cold-like symptoms.
- **Cover your coughs and sneezes**
Cover your mouth and nose with a tissue when coughing or sneezing. Throw the tissue in the trash afterward.
- **Clean and disinfect surfaces**
Clean and disinfect surfaces that people frequently touch, such as doorknobs. When people infected with RSV touch surfaces and objects, they can leave behind germs. Also, when they cough or sneeze, droplets containing germs can land on surfaces and objects.
- **Stay home when you are sick**
If possible, stay home from work, school, and public areas when you are sick. This will help protect others from catching your illness.



**Centers for Disease
Control and Prevention**
National Center for Immunization
and Respiratory Diseases